



Spooky² Scalar Digitizer

INSTRUCTION

November 2018
Spooky2 Team

Brief Overview

Biofeedback is a way of finding out what frequencies are best suited to your body. Spooky2 Scalar is the only Scalar device capable of doing biofeedback scan. Spooky2 Scalar Digitizer measures tiny changes in the scalar field during a scalar frequency scan. Scalar biofeedback requires the use of two generators. GX is two generators in one. G2 modulates the Scalar field, and G1 measures the response. Follow the instructions below to perform a Scalar biofeedback scan.

Step 1: Hardware

1. Connect Scalar Digitizer to the link cable port on the Scalar Transmitter.



2. Connect the link cable and power cable of Spooky2 Scalar.



3. Connect G1 Out 1 to the BNC port of Spooky2 Scalar Digitizer.



4. Connect G2 Out 1 to the BNC port of the Spooky2 Scalar Transmitter.



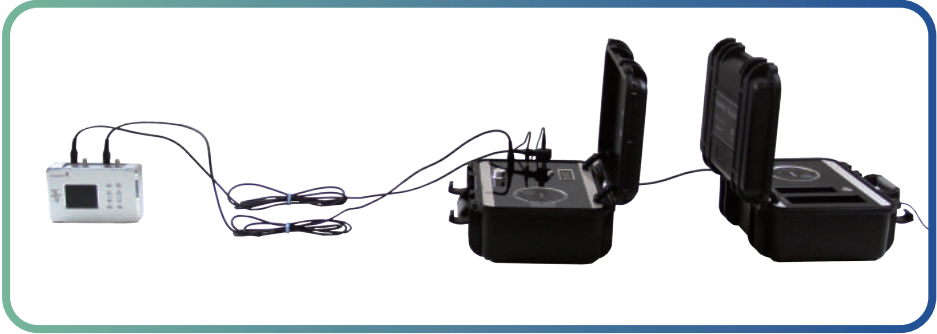
5. Connect GX to the computer and short press the Power button to turn on GX.



6. Turn on and tune your Spooky2 Scalar.

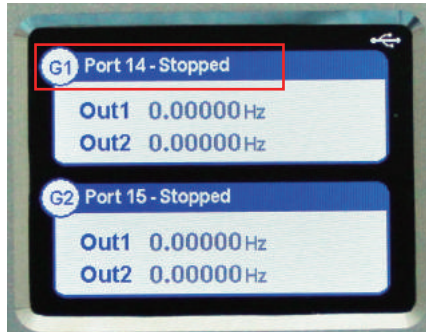
Tip:

GX must not be in the Scalar field, because the case and electronics in GX are metal, which will distort the field. Please keep GX 1m away from Spooky2 Scalar Transmitter, and 1m from the scalar field.

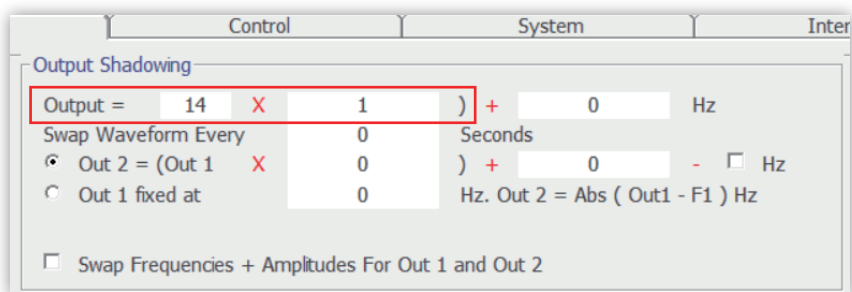
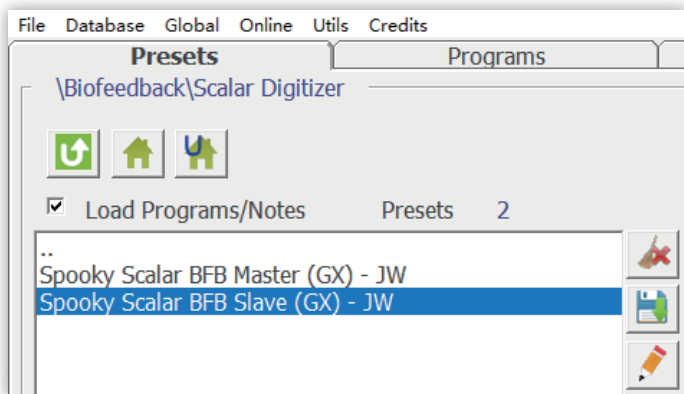


Step 2: Software

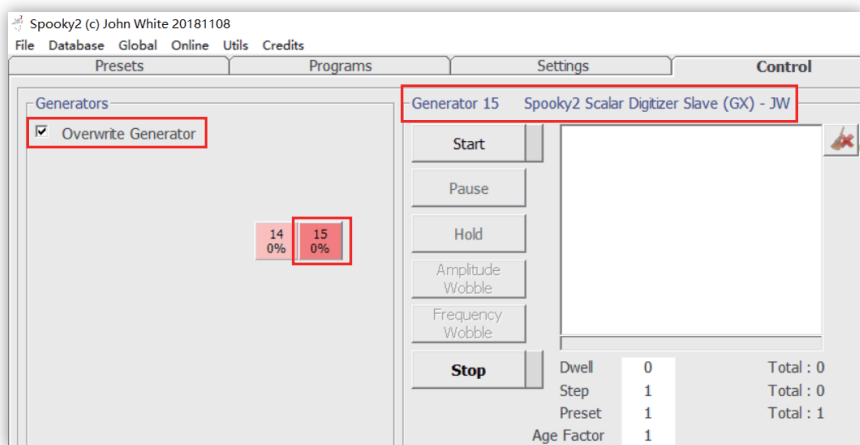
1. Launch the Spook2 software. Please take a note for the corresponding port numbers for G1 and G2, which can be seen on the GX display. In this example, G1 is Port 14 and G2 is Port 15.



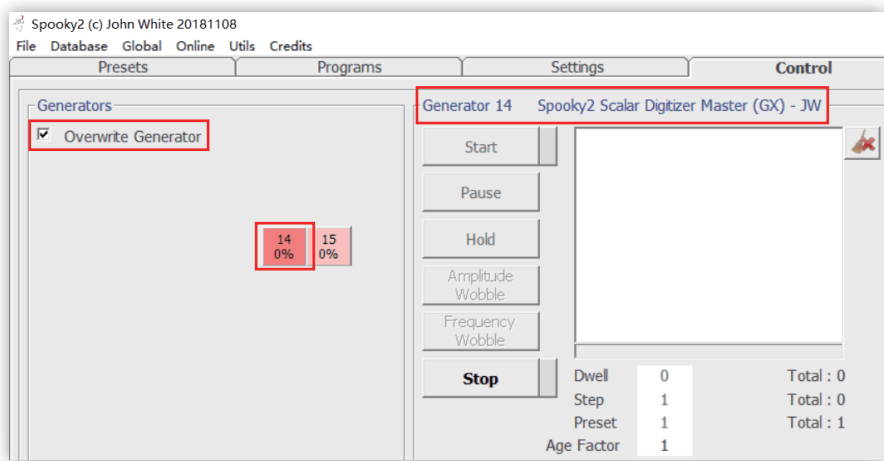
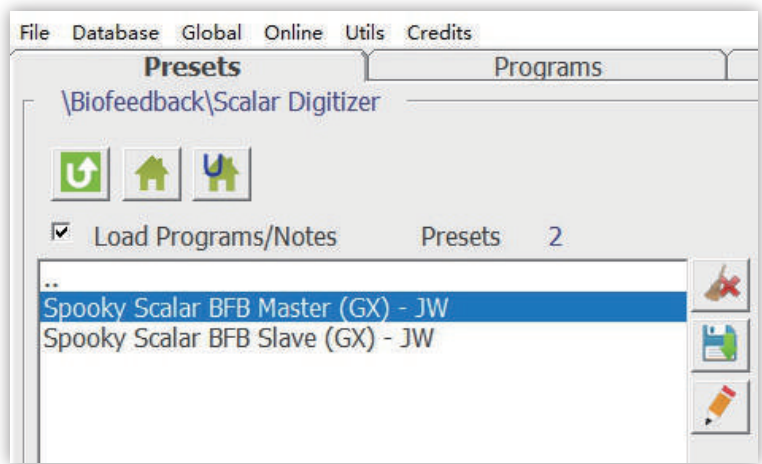
2. Select the Spooky2 Scalar Digitizer Slave (GX) - JW preset, then go to the Settings tab. In the Output Shadowing frame, set 'Output = [x]', x = the port number of G1. Here, x=14.



3. Go to the Control tab, tick Overwrite Generator and choose G2 (Port 15) to load the settings.



4. Then, go back to the Presets tab. Select the BFB Master preset, go to the Control tab, tick Overwrite Generator, and choose G1 (Port 14) to load the preset.



5. Lie between the two scalar units, and ask an assistant to click the Scan button to start the biofeedback scan.

Note: If you do not have anyone to help, set the Start Delay to 2000. This will give you time to start the biofeedback scan and position yourself correctly between the units.

Biofeedback Scan

Log Name

Start Frequency100 Hz

Finish Frequency50000 Hz

Initial Step Size5 Hz

Decimal Places0

Max Hits to Find20

Samples/Step3

Start Delay200

Threshold.1

Est. Duration00:12:22

Detect

☒ Max

☐ Min

☐ Change

☐ BPM

☐ HRV

☒ Angle

☐ Current

☐ Angle + Current

After Scan

☐ Run Hits

☐ Continue Refining Hits

Run on Gen0

Repeat1

Calculate Using

☒ Running Average

☐ Peak

☐ 2 DP Max

☒ Single Scan

☐ Grade Program

Refine +/-1

BPM0

HRV0

VI Angle0

Current0

Scan

Analyse

Analyse +

0

1

Spooky2 (c) John White 20181108

File Database Global Online Utils Credits

PresetsProgramsSettingsControlSystemInternetErrors

Generators

Ovenwrite Generator

140%

150%

Generator 15

Spooky2 Scalar Digitizer Slave (GX) - JW

Start

Pause

Hold

Amplitude Wobble

Frequency Wobble

Stop

Dwell0

Step1

Preset1

Age Factor1

Total: 0

Total: 1

Frequency Adjustment

+/-1 Hz

Estimated Total Run Time00:00:00

Current Preset Duration00:00:55

Current Chain Duration00:00:55

Reverse Lookup

☐ Include Octaves

☐ Search Custom Databases

☐ Search BFB Database

.025 % Tolerance

Include0

Hz In Search

Generator Output

Out 1

235.89438

Square

50%

5v

100%

0 Degrees

0

Out 2

0

Square

50%

5v

100%

0 Degrees

-

Load

Copy

Reset

Erase

Biofeedback Scan (14)

Log Name

Start Frequency100 Hz

Finish Frequency50000 Hz

Initial Step Size5 Hz

Decimal Places0

Max Hits to Find20

Samples/Step3

Start Delay200

Threshold.1

Est. Duration00:12:22

Detect

☒ Max

☐ Min

☐ Change

☐ BPM

☐ HRV

☒ Angle

☐ Current

☐ Angle + Current

After Scan

☐ Run Hits

☐ Continue Refining Hits

Run on Gen0

Repeat1

Calculate Using

☒ Running Average

☐ Peak

☐ 2 DP Max

☒ Single Scan

☐ Grade Program

Refine +/-1

BPM0

HRV0

VI Angle60

Current401.45

Scan

Analyse

Analyse +

60.02

60.01

60

100 - 50000

3

GC-2

RE-0

GE-0

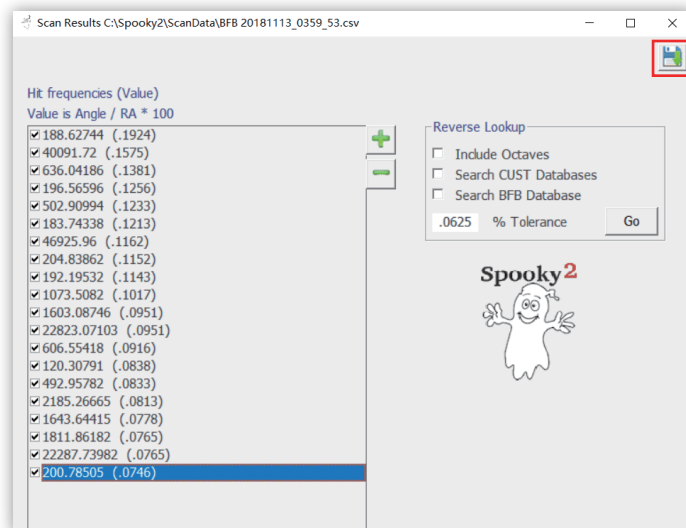
Spooky2 (c) John White 20181108

Screen shot

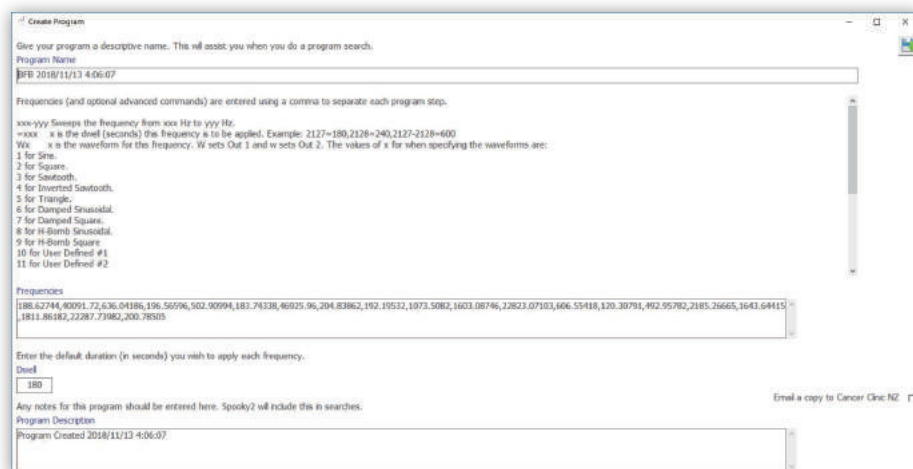
Customer Support

G2 will automatically start, causing Spooky2 Scalar to transmit the generator frequencies. G1 will start, but no frequencies will be produced. Instead, the amount of Scalar energy being absorbed for each frequency by the body will be recorded.

When your scan completes, you will see the results presented in a new window. Save the frequency results by clicking the Save button.

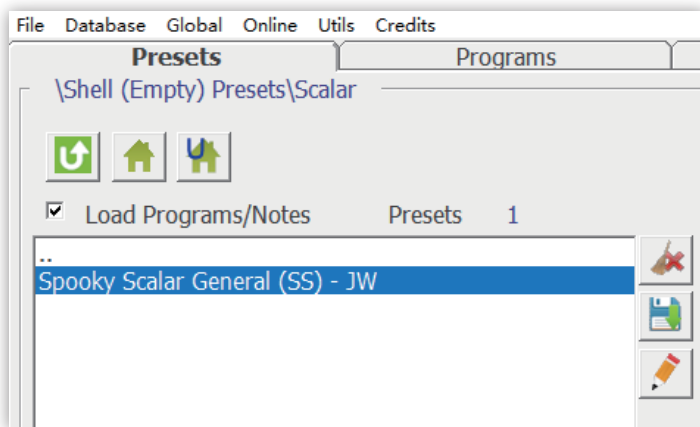


This will take you to the Create Program window. Name your scan results set appropriately, then select Save. We suggest including the person's name and date. You can edit the Notes if you wish for future reference.



Spooky2 will automatically refresh the database after adding a new program. Your new program can now be searched in the Programs tab.

Use Spooky Scalar General (SS) - JW preset to run your scan results.



Tips:

1. It is best to lie perfectly still, and only have one person in the Scalar field. This field extends outward, so ensure no living organism is nearby.
2. It is important to make a note which port numbers correspond to G1 and G2 before running a biofeedback.
3. Spooky2 Scalar BFB Master preset performs the recording. Spooky2 Scalar BFB Slave preset supplies the frequencies for Spooky2 Scalar modulation.
4. We suggest using G1 with Spooky2 Scalar BFB Master preset.
5. You can do short scans once a day and longer scans once a week.
6. When you run scan results, please remove Spooky2 Scalar Digitizer. Then use G2 to run your scan results.

Spooky²